



E-center

On-site Dispatch Console

- Portable design for flexible fast deployment
- Triple-screen for smooth voice, video and GIS-based dispatching
- Multiple link options for interconnection



Product Overview

E-center is an on-site command and dispatch center to provide immediate on-site response. The three-screen design integrates command & control, map, and video surveillance to provide the most comprehensive information possible in a visual manner. It also supports multiple links to interconnect with the command center in the rear area for collaboration. E-center can be used as on-site command center in multiple emergency scenarios such as firefighting, flood, earthquake and typhoon etc.

Hardware Appearance



Features

▶ Ultra-thin triple-screen design for comprehensive presentation

The triple-screen design allows for simultaneous display of the map, dispatch and video screens. Site commanders can understand the situation in a more holistic manner, which allows the on-site commander to get a full picture of real-time status.

▶ Various audible and visible interface for flexible dispatching

Except for the built-in MIC and speaker, E-center can also connect with external palm microphone, MIC, and earpiece. Multiple voice input and output options can meet on-site voice dispatch demands.

▶ Multiple links for collaborative command

E-center integrates the GSM, 3G/4G and WiFi modules and supports satellite and other links. It can transmit live voice and video back to the command center to realize "face-to-face" perception.

▶ Numerous power supply options to adapt to varied scenarios

The location-independent mechanism features the 185Wh battery (comes with the system and supports fast recharging) and backup battery (optional) and supports power supply from the mains, generator and vehicle.

▶ Trolley case for quick assembly

E-center with screens folded can be placed in the trolley case for quick assembly and transportation.

▶ Characteristic hardware to meet actual combat needs

- **Carbon fiber shell:** great strength and resistance to corrosion
- **Multifunction keys:** quick operation based on different software functions
- **Three-axis rocker:** remote video PTZ control via third-party software.
- **Industrial keyboard:** higher IP rating, enhanced adaptability in harsh environment

Highly-Integrated Lightweight Design



Solutions

Installed with PUC software

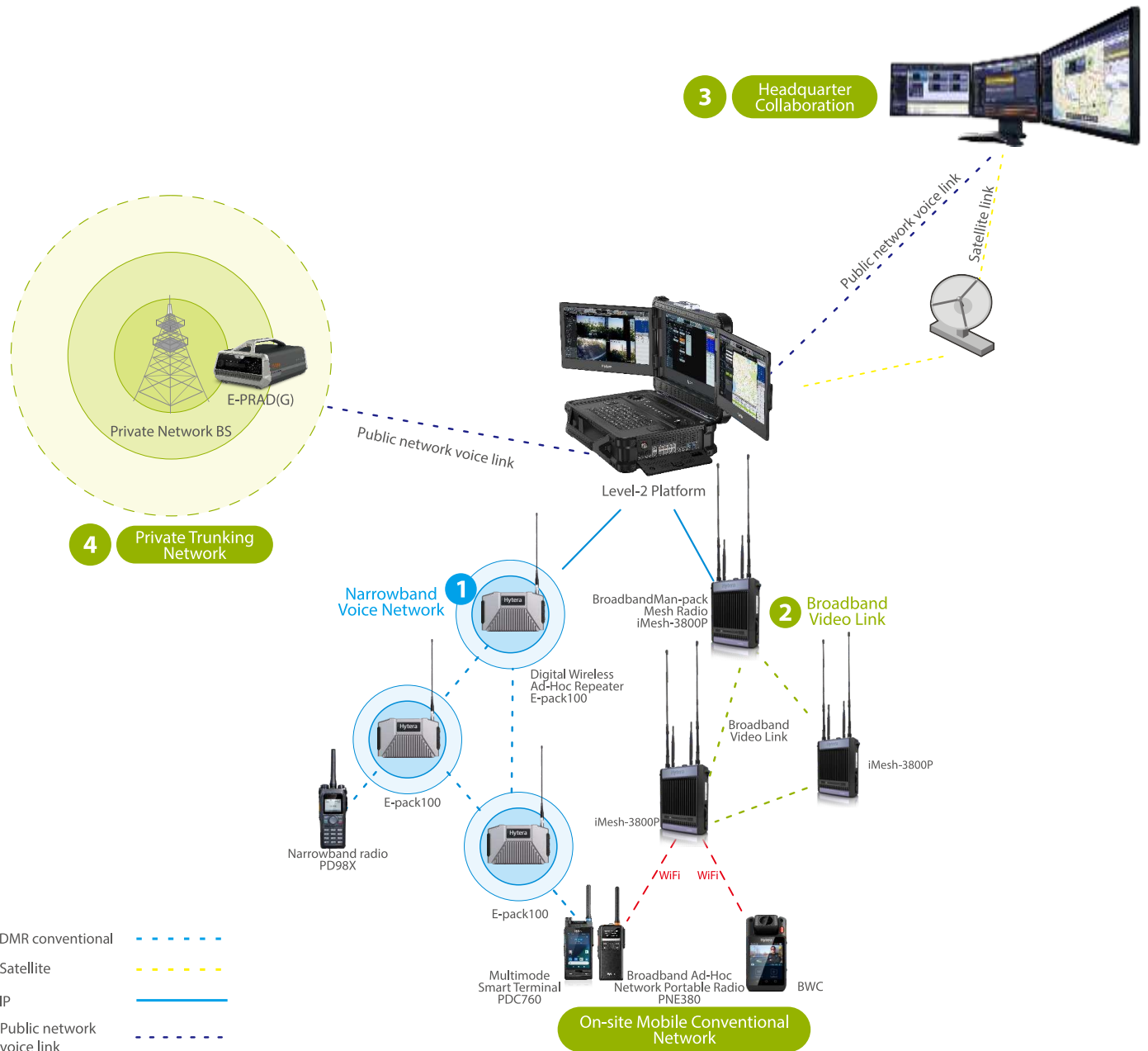
It features powerful network convergence capability to connect to broadband/narrowband private network and public network, achieving fully-integrated command and control. E-center can access various network shown as follows.

1.Narrowband voice network: interconnect with the narrowband networking device E-pack or E-pole via a wired IP or GSM link. Voice communication can be implemented when two-way radios or multi-mode advanced radios are equipped.

3.Headquarter Collaboration: interconnect with rear command center via public network voice link or a satellite link(with a satellite station).

2.Broadband Video Link: connect with iMesh devices via a wired IP or WiFi network. Data and video transmission can be implemented when a PDC760 multimode radio or VM680 BWC is equipped.

4.Private Trunking Network: interconnect with a private trunking network via a wired IP or public network voice link.



Involved Ad-Hoc Network Devices

Narrowband Ad-Hoc Network Devices



E-pack/E-pole

It provides coverage for on-site narrowband voice communication. It can be carried or mounted to a vehicle, pole, or a wall to meet the application needs in different scenarios.

Broadband Network Devices



iMesh3800/Emesh580P

Based on 4G and 5G technologies, it provides broadband links for live image and video transmission. It can be carried or mounted to a vehicle, pole, or a wall to meet the application needs in different scenarios.

Network Access Devices



E-PRAD(G)

It supports three modes for interconnection of the public network, private network, and central network.

PUC Functions

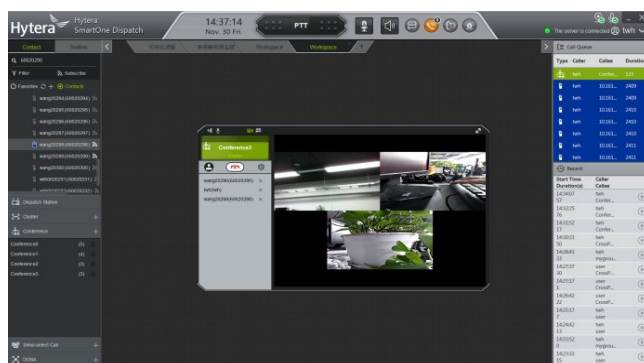
Voice Communication

- Half-duplex voice group call(narrowband): The dispatcher can initiate a one-to-many half-duplex call to a group. The client can initiate multiple group calls at the same time
- Audio group call: The dispatcher can initiate a voice conference to multiple users, such as a single terminal or a group. Members can be added or deleted during the meeting.



Video Communication

- Full-duplex video individual call: The dispatcher can establish a two-way video call to a single terminal.
- Full-duplex video conference: The dispatcher can establish two-way video calls to multiple terminals or groups.
- Video pull: A one-way video session initiated by the dispatcher uploads videos from one or more terminals to the dispatcher.

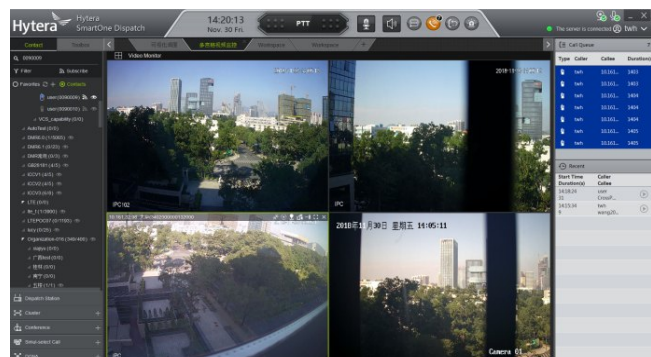


Video Surveillance

- The dispatcher can view the video of the video surveillance system, body worn cameras and multi-mode radios.
- Adapted to E-center rocker for video PTZ(Pan/Tilt/Zoom) control.
- Adapted to camera (Model: DS-MH6171)

Video Backhaul

- On-site voice and video can be transmitted back to rear dispatch center.

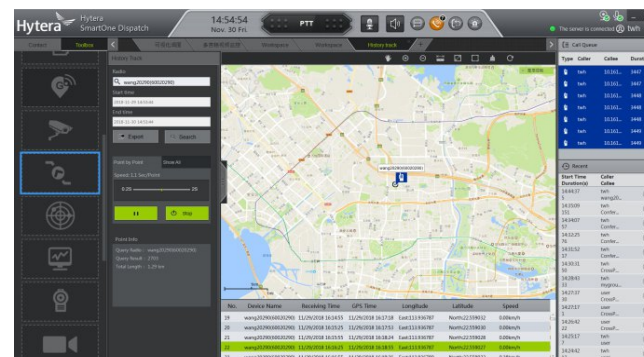


Device positioning

- GPS pulling/ subscription of multi-mode advanced radio
- GPS report of E-pack
- GPS report of narrowband radio

Map Engine

- Supporting PGIS, Google online map, Google off-line map and MapXtreme.



Technical Specifications

Item	Specifications
Battery voltage	Rated 14.8V
Adapter input voltage	90-264V AC (50/60Hz)/12-36V DC
Adapter output voltage	11.4-16.8V DC
Battery capacity	185 Wh
Standby power consumption	< 5 W
Operating power consumption	< 100 W
Operating time	4 hours
CPU	Intel i7-6600U, dual core 4 threads, 2.6 GHz
	RAM 24G, hard disk 1T
LCD	1920x1080,15.6-inch, 3 pieces
Dimensions	48.5x35.6x16 cm (LxWxD)
Weight	15 kg (including battery)
Operating temperature	-10°C to +50°C
Storage temperature	-20°C to +60°C
Operating humidity	20%-85%
HDMI input	Maximum 1920×1080, 1 way
HDMI output	Up to 3840×2160@60Hz, 1 way
USB port	USB3.0, 4 pieces
SIM card holder	Standard SIM card
Audio input	Built-in MIC, palm microphone, external MIC
Audio output	Built-in speaker, external earpiece
Ethernet port WAN	10/100M, self-adaptive, 1 way
Ethernet port LAN	100/1000M, self-adaptive, 8 ways
PoE	802.3af PoE, 4 ways, a single way up to 25W



Hytera Communications Corporation Limited

Stock Code: 002583.SZ

Address: Hytera Tower, Hi-Tech Industrial Park North, 9108# Beihuan Road, Nanshan District, Shenzhen, P.R.C

Tel: +86-755-2697 2999 Fax: +86-755-8613 7139 Post: 518057

Https://www.hytera.com marketing@hytera.com



Hytera retains right to change the product design and specification. Should any printing mistake occur, Hytera doesn't bear relevant responsibility. Little difference between real product and product indicated by printing materials will occur by printing reason.

HYT, Hytera are registered trademarks of Hytera Communications Corp., Ltd. ©2023 Hytera Communications Corp., Ltd. All Rights Reserved.